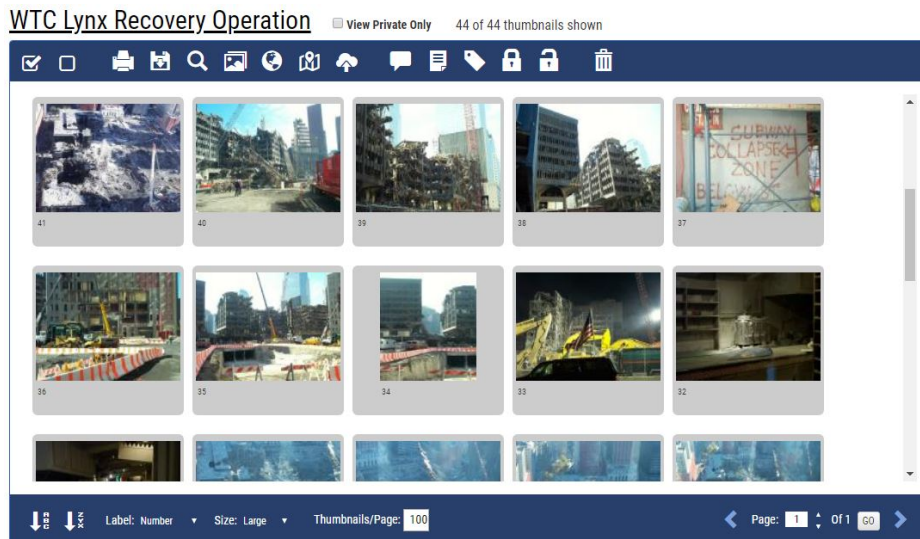


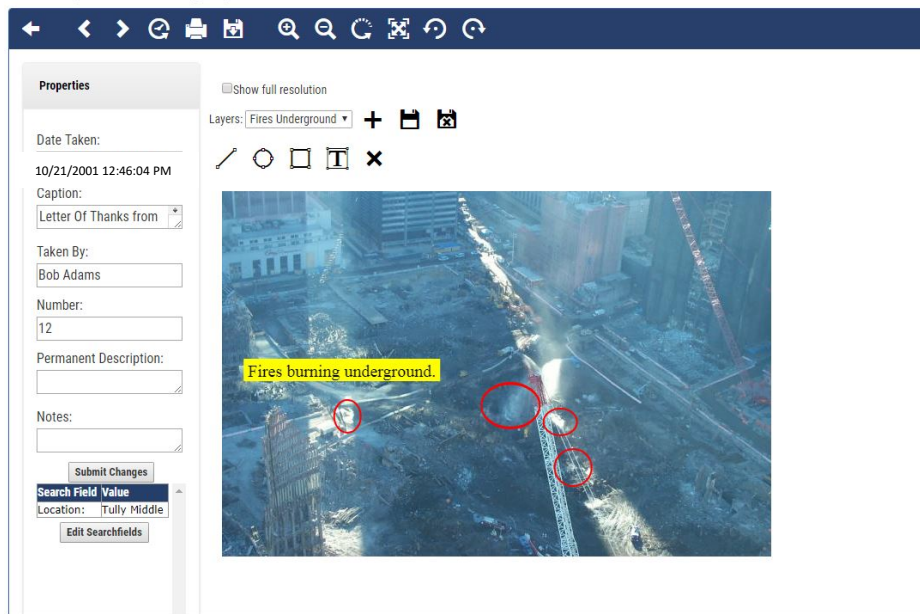
We at Lynxpm take pride in working with agencies to provide custom software and services. We have written custom applications and add on applications that integrate with our main system for clients such as U.S. Army Corps of Engineers, City of New York, Los Angeles Police Department, Ohio EPA and others. Please contact us if you need custom software or services. (877) 955-7711 / [sales@lynxpm.com](mailto:sales@lynxpm.com) [www.lynxdems.com](http://www.lynxdems.com). See our NYC letter of thanks below.

### Lynx DEMS Thumbnail view of recovery images taken on site.



### Lynx DEMS Viewer utilizing “Red-Line/Mark-Up” tool to draw attention to areas of the image.

WTC Lynx Recovery Operation





# DCC

City of New York Department of Design and Construction

**Kenneth Holden**  
Commissioner

**Michael Burton, P.E.**  
Executive Deputy Commissioner

30-30 Thomson Avenue  
Long Island City, NY 11101

Tel. 718 / 391-1591  
Fax 718 / 391-3480  
[www.nyc.gov/buildnyc](http://www.nyc.gov/buildnyc)

December 8, 2001

Mr. Bob Adams  
President  
Lynx PM  
2150 East Manhattan Drive  
Tempe, AZ 85282

Re: World Trade Center Recovery Effort.

Dear Mr. Adams;

On Behalf of the City of New York, Department of Design & Construction, I would like to thank you and your team for the tremendous job installing the software and website for the time lapse photography at the World Financial Center 3. Your equipment has been of critical value to the recovery operation.

We would like to recognize your effort and dedication performing long hours of work to complete the task in the short amount of time allowed. The quality and excellence of the work is greatly appreciated. Please thank your team for their incredible effort.

Sincerely,

Rebecca J. Clough, RLA  
Program Director